

STATS WINDOW

Economy at a Glance

Box 1. Public Provision of Private Goods and Services

This Box “charts” the progress made in the government’s provision of some key private goods and services. *A. Sanitation (“Swachh Bharat”)*

Table 1. Toilet Coverage and Usage

Data Source	Toilet Coverage (in percent of Households in Rural India)				Toilet usage (in percent of those with Toilets)
	Census 2011	NFHS 2015-16	QCI (2017)*	Nov-2017 (SBM-MIS)**	QCI (2017)*
All India - Rural	31	47	63	74	91

Source: Census, National Family Health Survey (NFHS) 2015-16; * -Based on the Swachh Survekshan Gramin 2017 conducted by Quality Council of India as a third party assessment. 1.4 lakh rural households were surveyed across 4626 villages.

** As reported by Swachh Bharat Mission MIS system.

B. Bank Accounts

Figure 1. Jan Dhan Accounts (in crores)

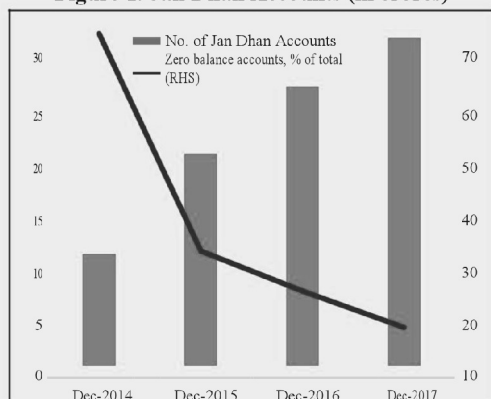
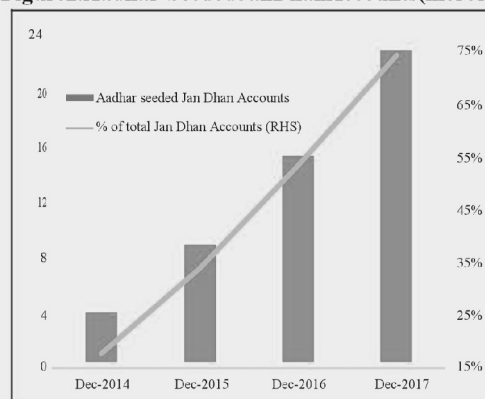


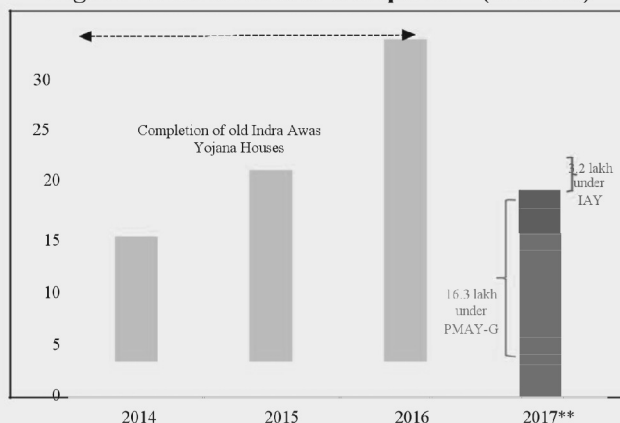
Figure 2. Aadhar-Seeded Jan Dhan Accounts (in crores)



Source: Department of Financial Services, Survey calculations.

C. Housing – Pradhan Mantri Awas Yojana-Gramin

Figure 3. Rural Houses Completed* (in lakhs)



Source: MoRD; Blocks in Yellow represent completed houses under the old Indra Awas Yojana (IAY); ** - The green block represents completed houses under the Pradhan Mantri Awas Yojana-Gramin (PMAY-G) as of 20th January 2018. PMAY-G was launched in November, 2016.

D. Gas connections: Ujjwala

Figure 4. Ujjwala Connections Issued
(Cumulative, millions)

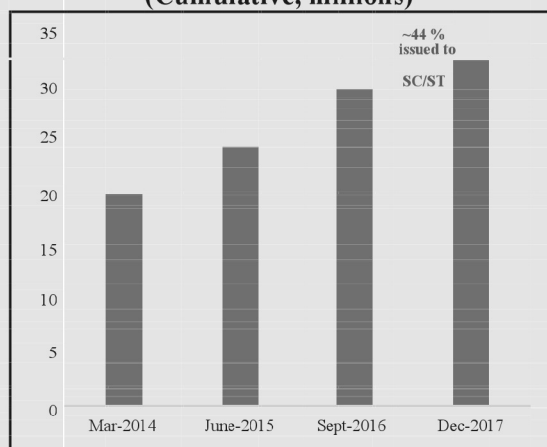
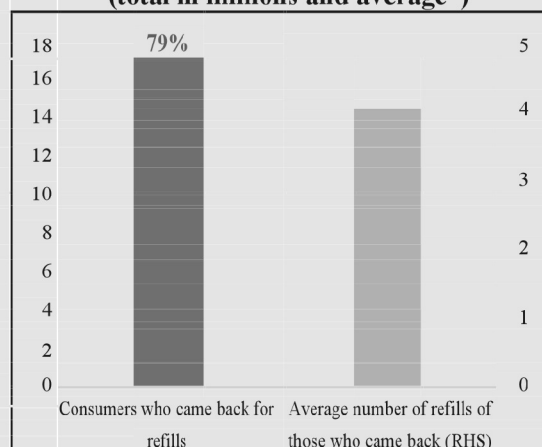


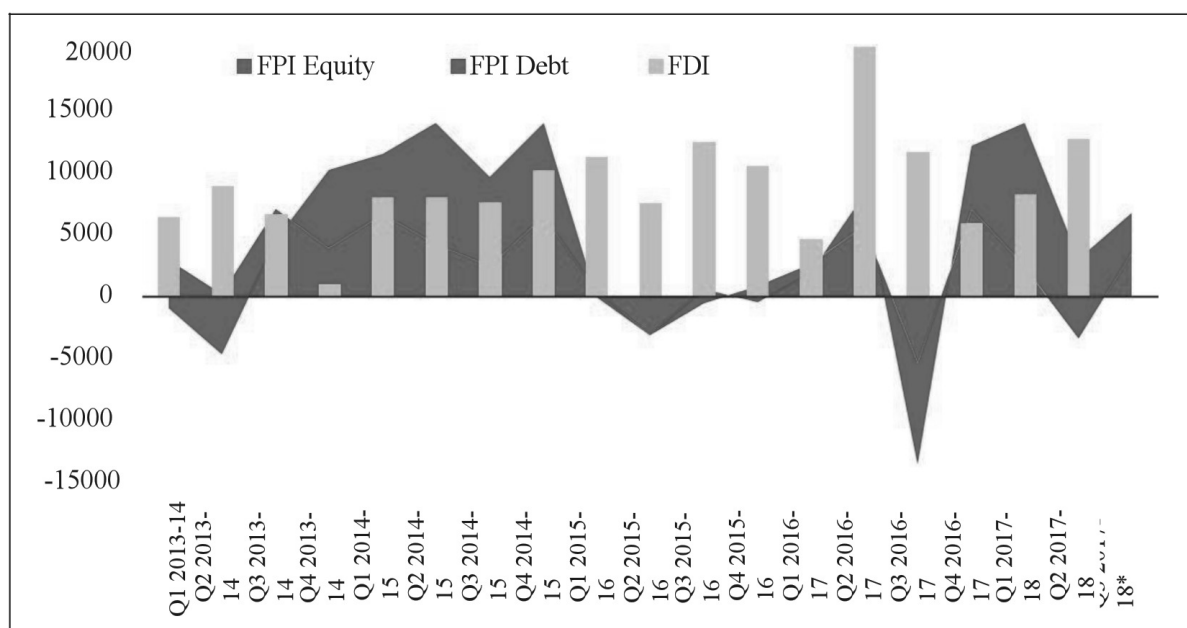
Figure 5. Ujjwala Refills
(total in millions and average*)



Source: Ministry of Petroleum & Natural Gas.

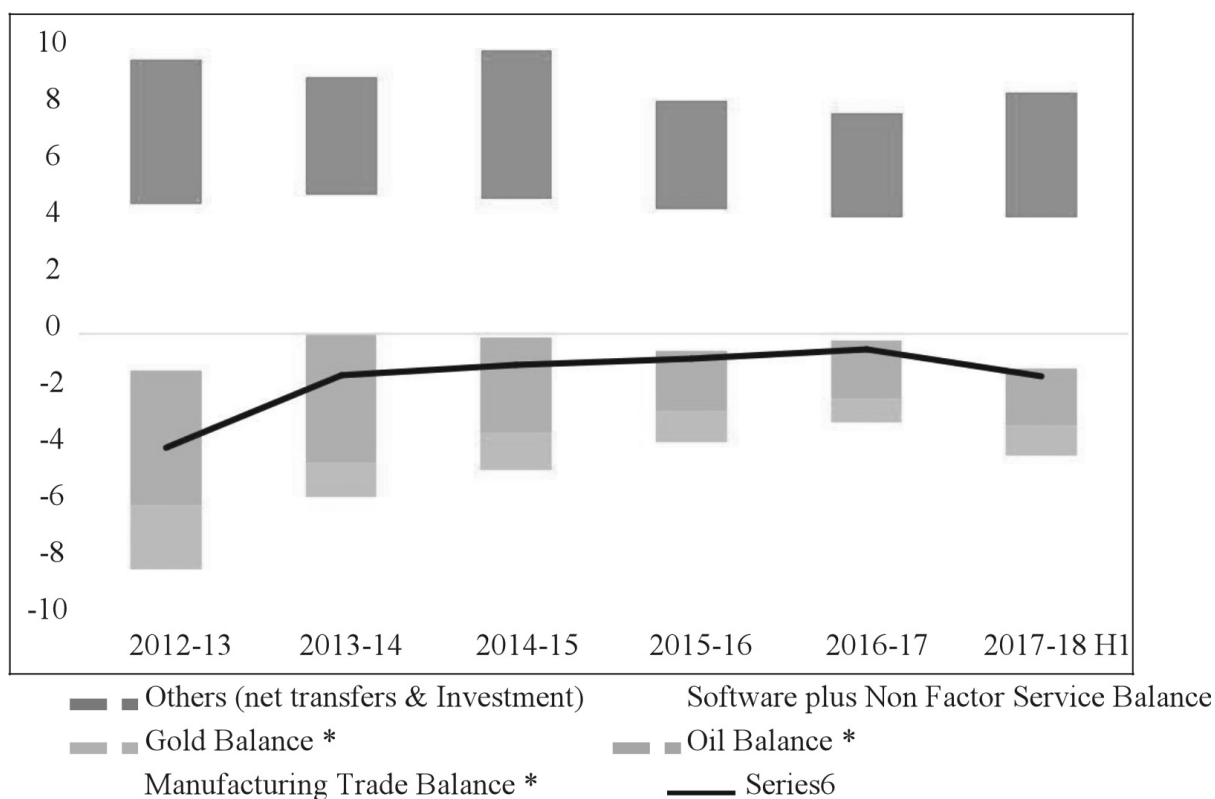
* Based on data of new connections issued between 1st May 2016 to 30th April, 2017.

Figure 6. Net Capital Inflows (US\$ million)



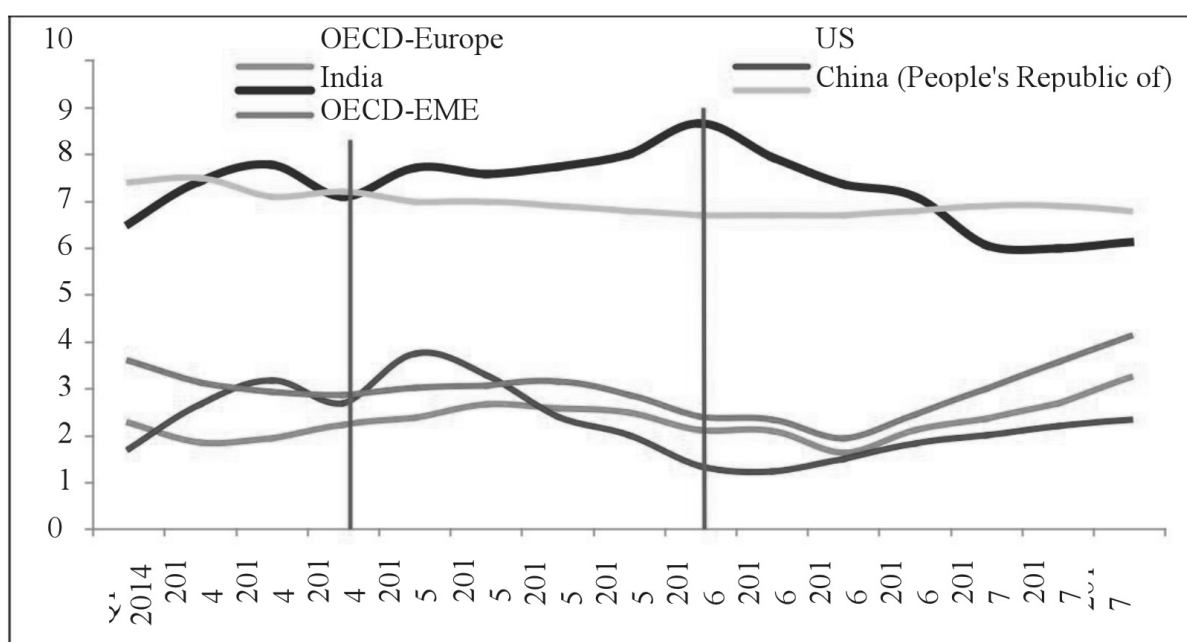
Source: RBI, Survey calculations. *-Data for FDI is not available for Q3.

Figure 7. Current Account Balance (in percent of GDP)



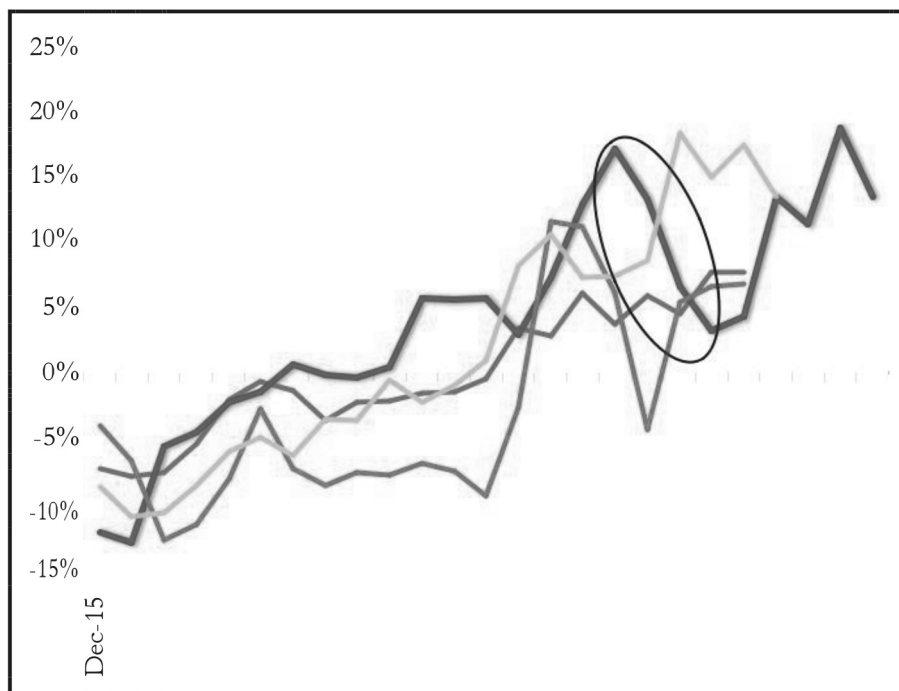
Source: RBI, Survey calculations; * - Based on Customs data.

Figure 8. India's Comparative Growth, 2014Q1-2017Q3



Source: OECD, Survey calculations. Growth rate of seasonally adjusted real GDP.

Figure 9. Growth of Manufacturing Export Value
(Year-on-year, 3 month moving average)



Source: International Trade Statistics (ITC) & DGCIS.

Figure 10. Growth of Manufacturing Import Value
(Year-on-year, 3 month moving average)

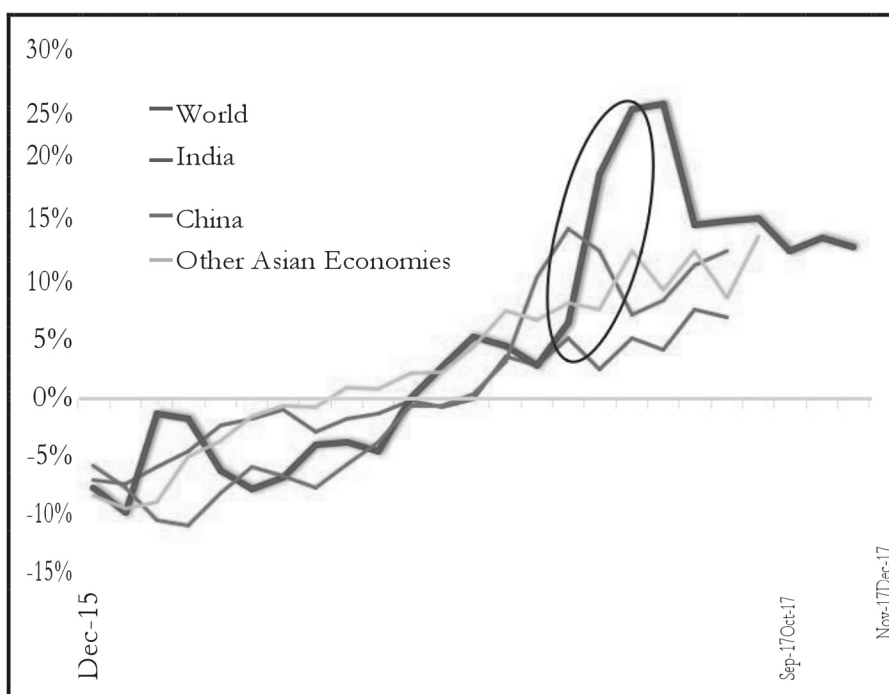
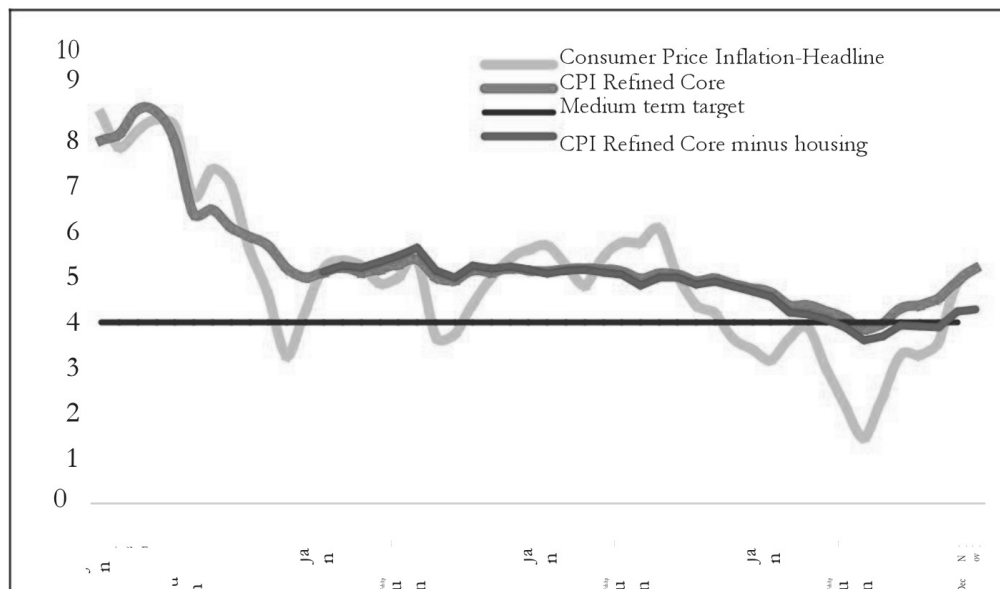


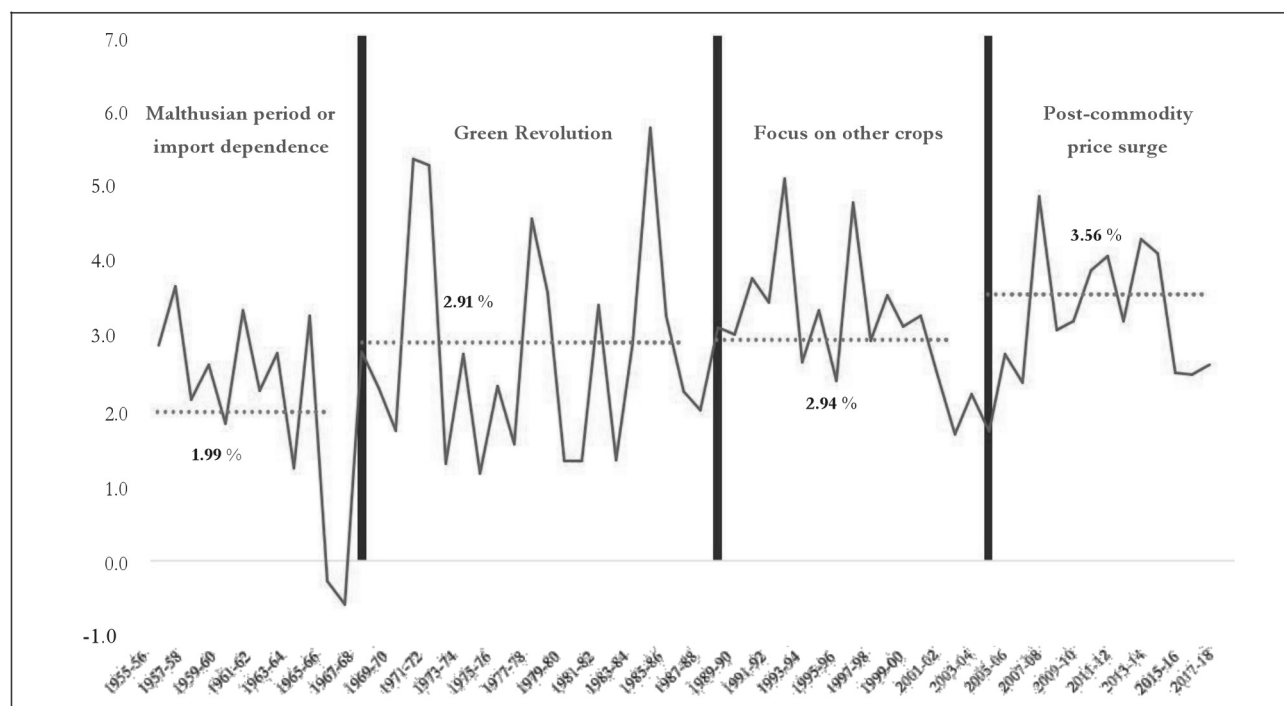
Figure 11. Inflation: CPI and Variants*
(percent, year-on-year)



Source: MoSPI, Survey calculations.

*CPI Refined Core is obtained by stripping out the volatile food and fuel components

Figure 12. Real Agricultural GVA Growth in India, 1960-2016
(in percent, 5 year moving average)



Source: Survey calculations.

Note: Numbers represent average agricultural growth rates for each period in percent.

Figure 13. Real Agricultural GDP Growth, China and India, 1960-2016
(in percent)

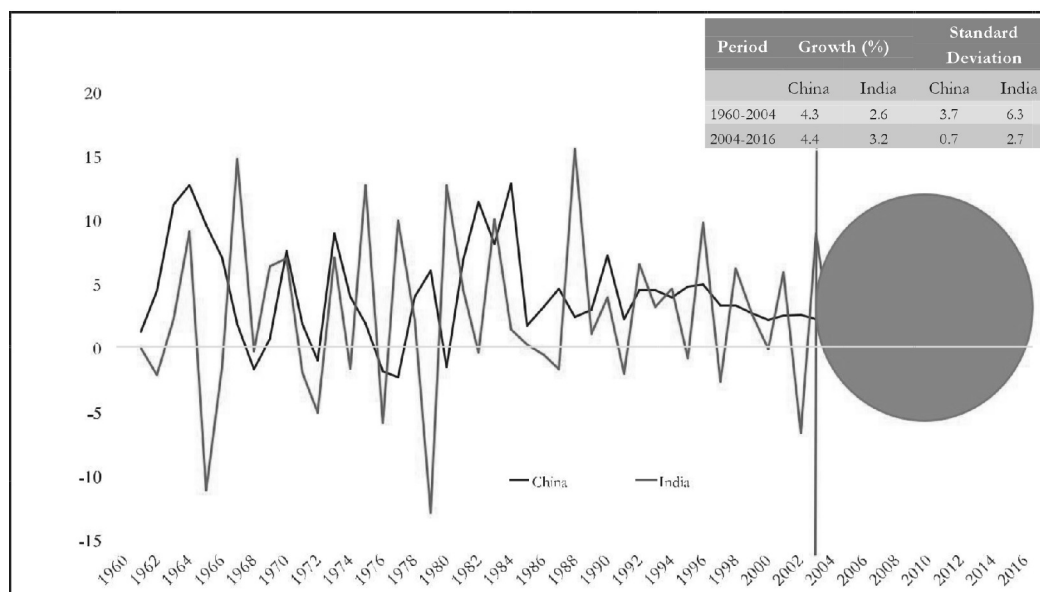


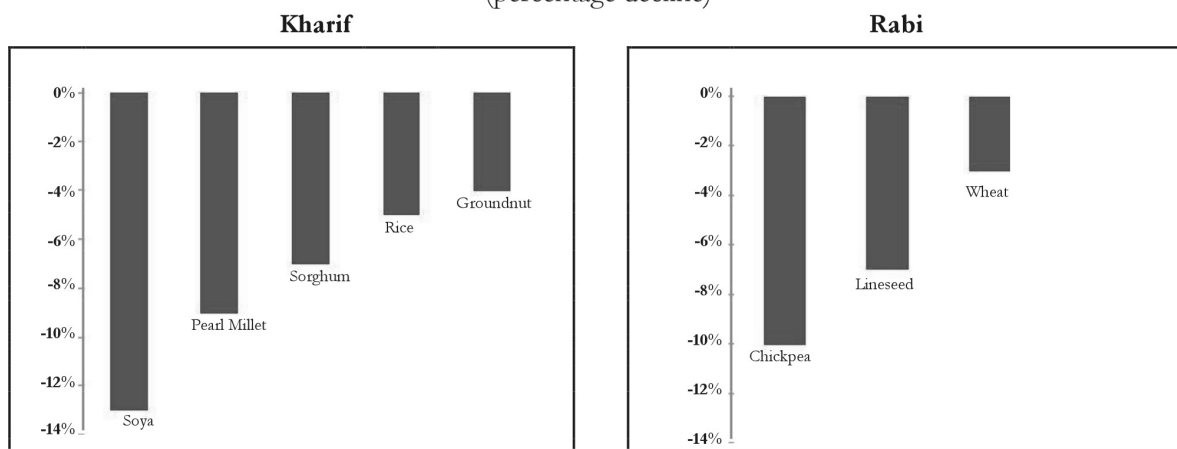
Figure 14. Impact of Weather Shocks on Agricultural Yields

(percentage decline in response to temperature increase and rainfall decrease)

	Extreme Temperature Shocks	Extreme Rainfall Shocks
Average Kharif	4.0%	12.8%
Kharif, Irrigated	2.7%	6.2%
Kharif, Unirrigated	7.0%	14.7%
Average Rabi	4.7%	6.7%
Rabi, Irrigated	3.0%	4.1%
Rabi, Unirrigated	7.6%	8.6%

Figure 15. Effects of Extreme Temperature Increase on Crop Yields

(percentage decline)



Source: Survey calculations from IMD and ICRISAT data.

Figure 16 : Effects of Rainfall on Yields

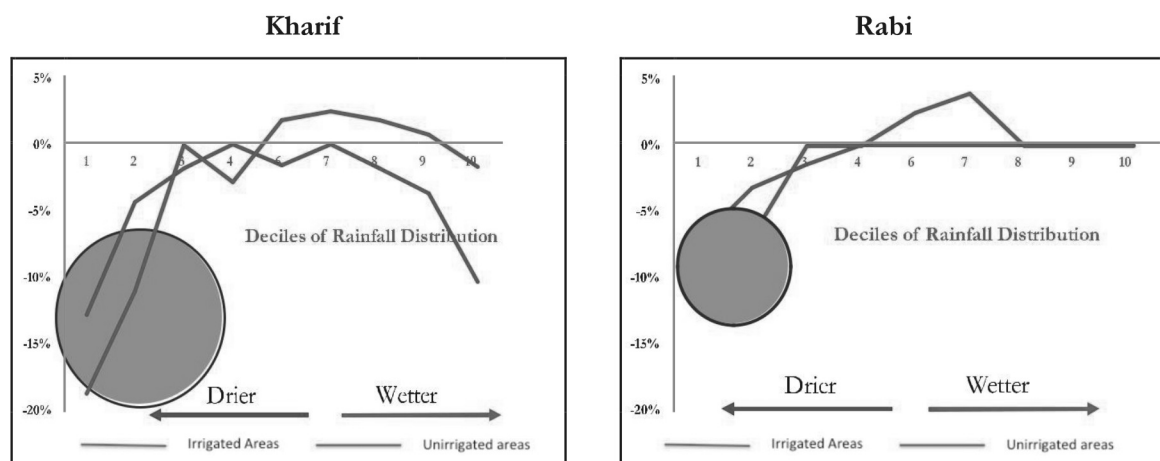


Figure 17. Effects of Extreme Rainfall Decrease on Crop Yields
(percentage decline)

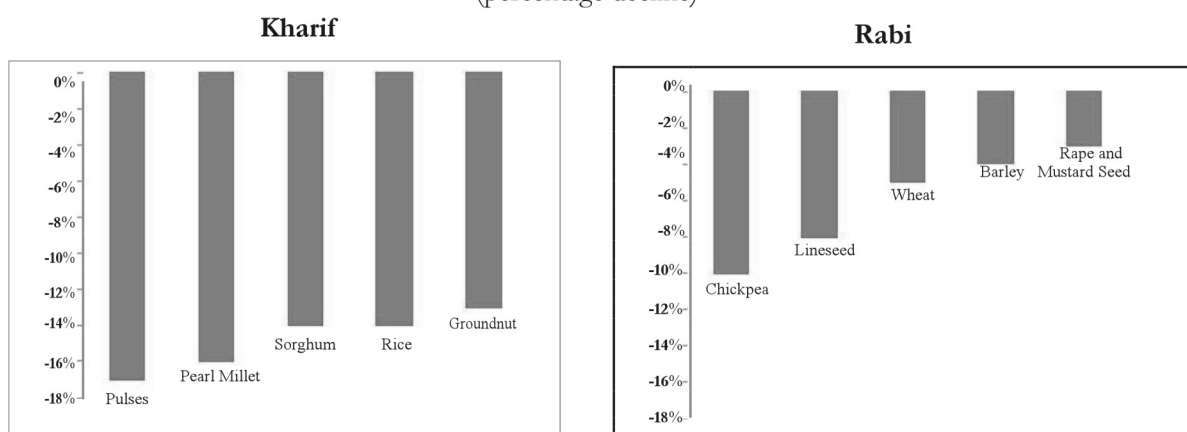
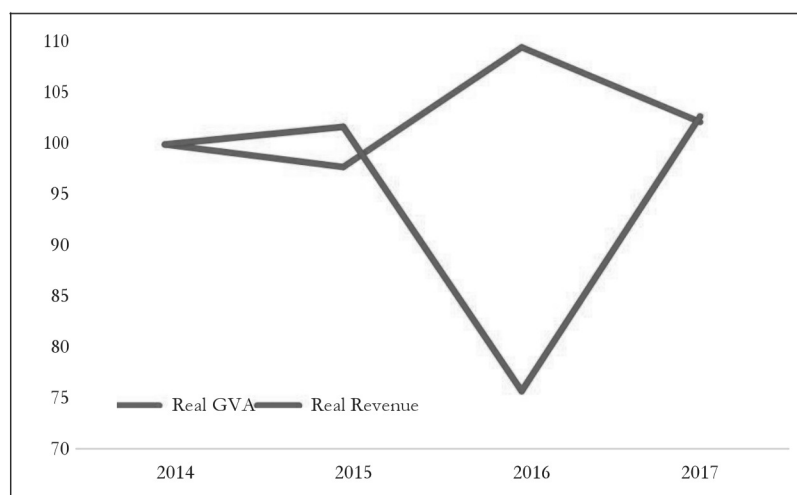


Figure 18. Agriculture: Real GVA and Real Revenue
(Crops: 2014 = 100)



Source: AGMARKNET, Survey calculations.